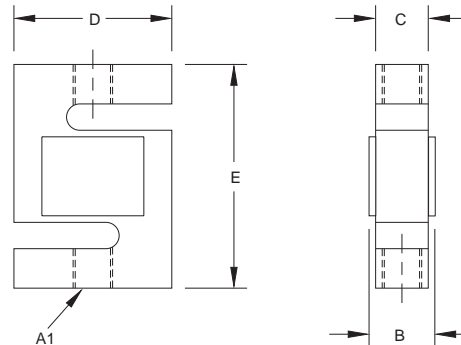


## RL20000 S-Beam, Alloy Steel NTEP 1:5000 Class III/1:10000 Class III L Single Cell



### SPECIFICATIONS:

Full Scale Output:	3.0 mV/V
Bridge Resistance:	350 ohms, nominal
Material/Finish:	High-alloy steel, nickel plated
Temperature:	Compensated range 14°F to 104°F/-10°C to 40°C
Seal Type:	Environmentally protected
Safe Overload:	150% Full scale
Rated Excitation:	10V DC (15V maximum)
Nonlinearity:	0.03% Full scale
Hysteresis:	0.02% Full scale
Insulation Resistance:	5000 megohms
Cable Length:	20'/6.1m
Cable Color Code:	Red ..... + Excitation Black ..... - Excitation Green ... + Signal White ..... - Signal
Warranty:	2 years

### RATED CAPACITY

	A1	B	C	D	E
<b>lb/inches</b>					
25-300	1/4-28 UNF-2B	.75	.50	2.00	2.50
500-1500	1/2-20 UNF-2B	1.00	.75	2.00	2.50
2000-2500	1/2-20 UNF-2B	1.25	1.00	2.00	2.50
3000	1/2-20 UNF-2B	1.25	1.00	3.00	4.00
5000-10,000	3/4-16 UNF-2B	1.25	1.00	3.00	4.00
15,000	1-12 UNF-2B	1.50	1.25	4.00	5.50
20,000	1 1/4-12 UNF-2B	2.25	2.00	5.00	7.00

### kg/millimeters

11.3-136.1	1/4-28 UNF-2B	19.1	12.7	50.8	63.5
226.8-680.4	1/2-20 UNF-2B	25.4	19.1	50.8	63.5
907.2-1134.0	1/2-20 UNF-2B	31.8	25.4	50.8	63.5
1360.8	1/2-20 UNF-2B	31.8	25.4	76.2	101.6
2268.0-4535.9	3/4-16 UNF-2B	31.8	25.4	76.2	101.6
6803.9	1-12 UNF-2B	38.1	31.8	101.6	139.7
9071.9	1 1/4-12 UNF-2B	57.2	50.8	127.0	177.8

### RL20000 ORDER INFORMATION

Load Rating	Part #	Suggested List Price
25 lb (11.3 kg)	21428	\$275.00
50 lb (22.7 kg)	21429	\$275.00
75 lb (34.0 kg)	21430	\$275.00
100 lb (45.4 kg)	21431	\$275.00
150 lb (68.0 kg)	21432	\$275.00
200 lb (90.7 kg)	21433	\$275.00
250 lb (113.4 kg)	21434	\$275.00
300 lb (136.1 kg)	21435	\$275.00
500 lb (226.8 kg)	21436	\$275.00
750 lb (340.2 kg)	21437	\$275.00
1000 lb (453.6 kg)	21438	\$275.00
1500 lb (680.4 kg)	21439	\$275.00
2000 lb (907.2 kg)	21440	\$275.00
2500 lb (1134.0 kg)	21441	\$315.00
3000 lb (1360.8 kg)	21442	\$315.00
5000 lb (2268.0 kg)	21443	\$440.00
10,000 lb (4535.9 kg)	21444	\$440.00
15,000 lb (6803.9 kg)	21445	\$555.00
20,000 lb (9071.9 kg)	21446	\$875.00

### Conduit Adapter Kit\* (must be factory installed to maintain warranty)

3/8-24 Nipple	31533*	\$15.00
3/8-24 to 1/4-18 NPT	31534*	\$15.00

\*Parts #31533 and #31534 must be installed together to form the Conduit Adapter Kit.

### INTERCHANGEABLE PRODUCTS

Manufacturer	Model
Celltron	(see page 172) STC Low-Capacity
Revere Transducers	(see page 228) 363
Sensortronics	(see page 267) 60036
Artech	20210

### WEIGH MODULE AVAILABLE

Model	Page #
ITCM Isolated Tension Cell Mount	325 or pg. 22